



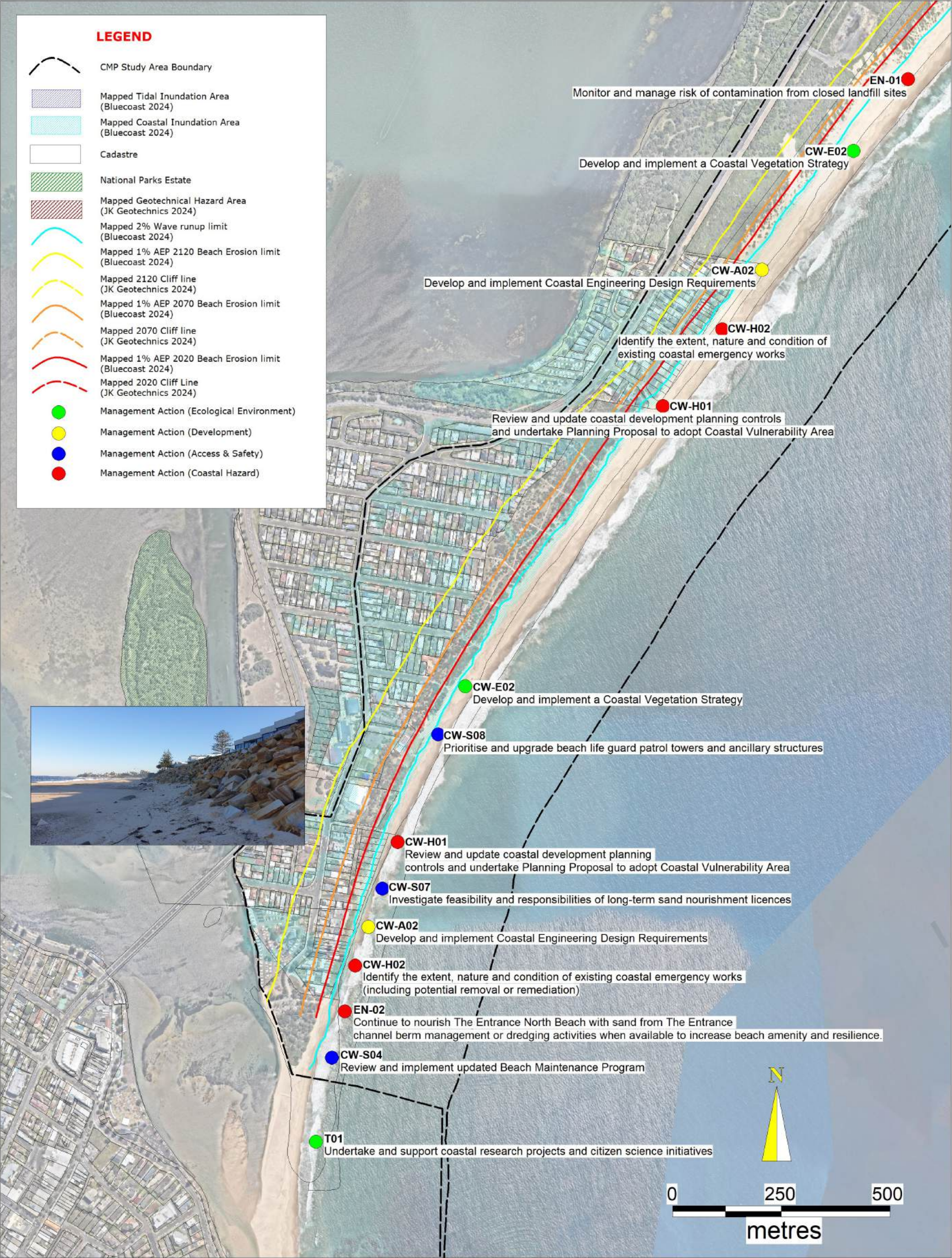





DATE 23.03.2025	COORDINATE SYSTEM MGA 94 Zone 56	FIGURE TITLE Map A20 Coastal Management Actions Hargraves Beach and Lakes Beach	  
PROJECT NO. 311015-00572	PROJECT TITLE Central Coast Open Coast Coastal Management Program	CREATED BY CA	



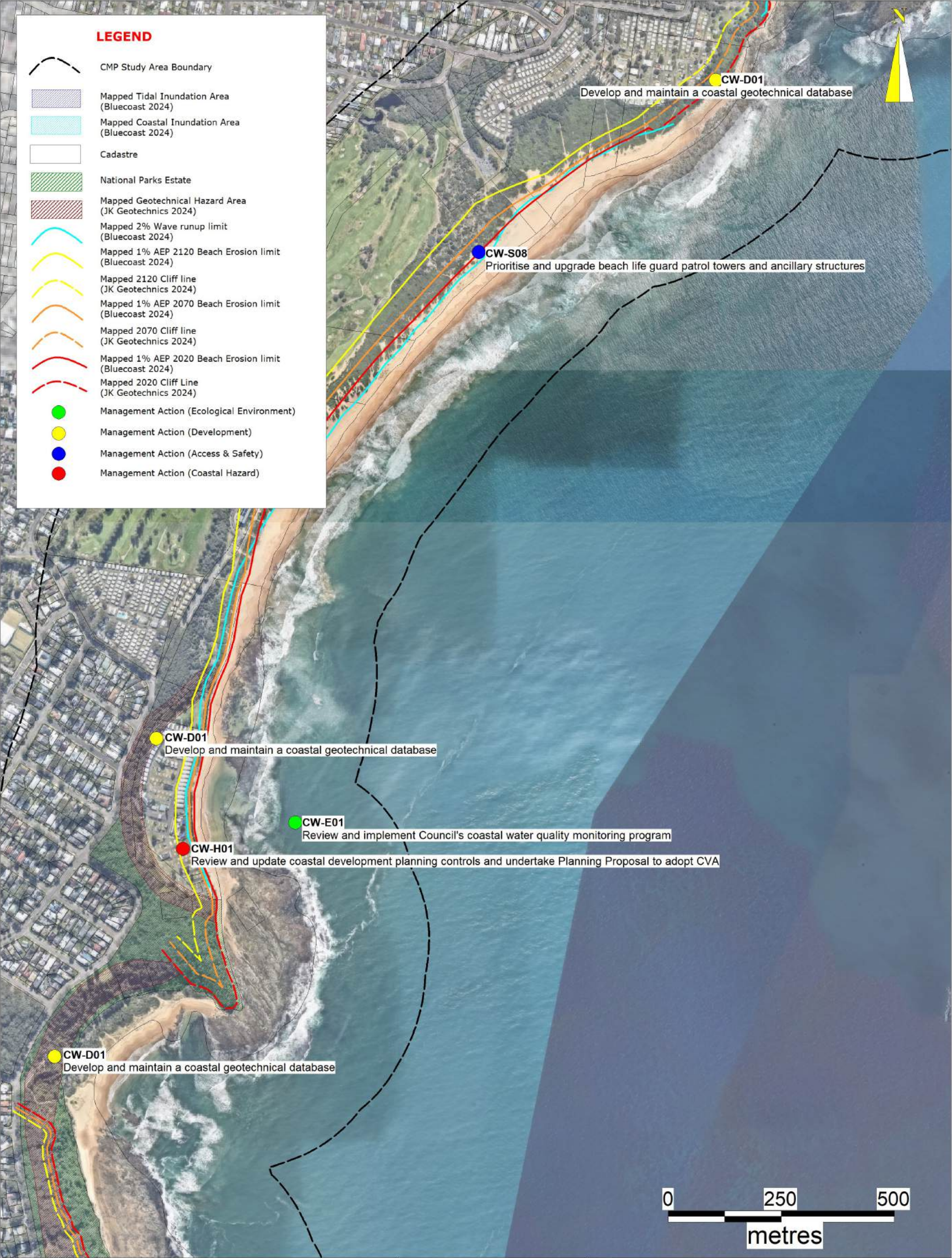
DATE 23.03.2025	COORDINATE SYSTEM MGA 94 Zone 56	FIGURE TITLE Map A21 Coastal Management Actions Soldiers Beach and Norah Head	  
PROJECT NO. 311015-00572	PROJECT TITLE Central Coast Open Coast Coastal Management Program	CREATED BY CA	



DATE 23.03.2025	COORDINATE SYSTEM MGA 94 Zone 56	FIGURE TITLE Map A22 Coastal Management Actions The Entrance North	  
PROJECT NO. 311015-00572	PROJECT TITLE Central Coast Open Coast Coastal Management Program	CREATED BY CA	



DATE 23.03.2025	COORDINATE SYSTEM MGA 94 Zone 56	FIGURE TITLE Map A23 Coastal Management Actions Toowoan Bay, Blue Bay, The Entrance	  
PROJECT NO. 311015-00572	PROJECT TITLE Central Coast Open Coast Coastal Management Program	CREATED BY CA	



DATE 23.03.2025	COORDINATE SYSTEM MGA 94 Zone 56	FIGURE TITLE Map A24 Coastal Management Actions Bateau Bay and Shelly Beach	  
PROJECT NO. 311015-00572	PROJECT TITLE Central Coast Open Coast Coastal Management Program	CREATED BY CA	



LEGEND

CMP Study Area Boundary

Mapped Tidal Inundation Area (Bluecoast 2024)

Mapped Coastal Inundation Area (Bluecoast 2024)

Cadastre

National Parks Estate

Mapped Geotechnical Hazard Area (JK Geotechnics 2024)

Mapped 2% Wave runup limit (Bluecoast 2024)

Mapped 1% AEP 2120 Beach Erosion limit (Bluecoast 2024)

Mapped 2120 Cliff line (JK Geotechnics 2024)

Mapped 1% AEP 2070 Beach Erosion limit (Bluecoast 2024)

Mapped 2070 Cliff line (JK Geotechnics 2024)

Mapped 1% AEP 2020 Beach Erosion limit (Bluecoast 2024)

Mapped 2020 Cliff Line (JK Geotechnics 2024)

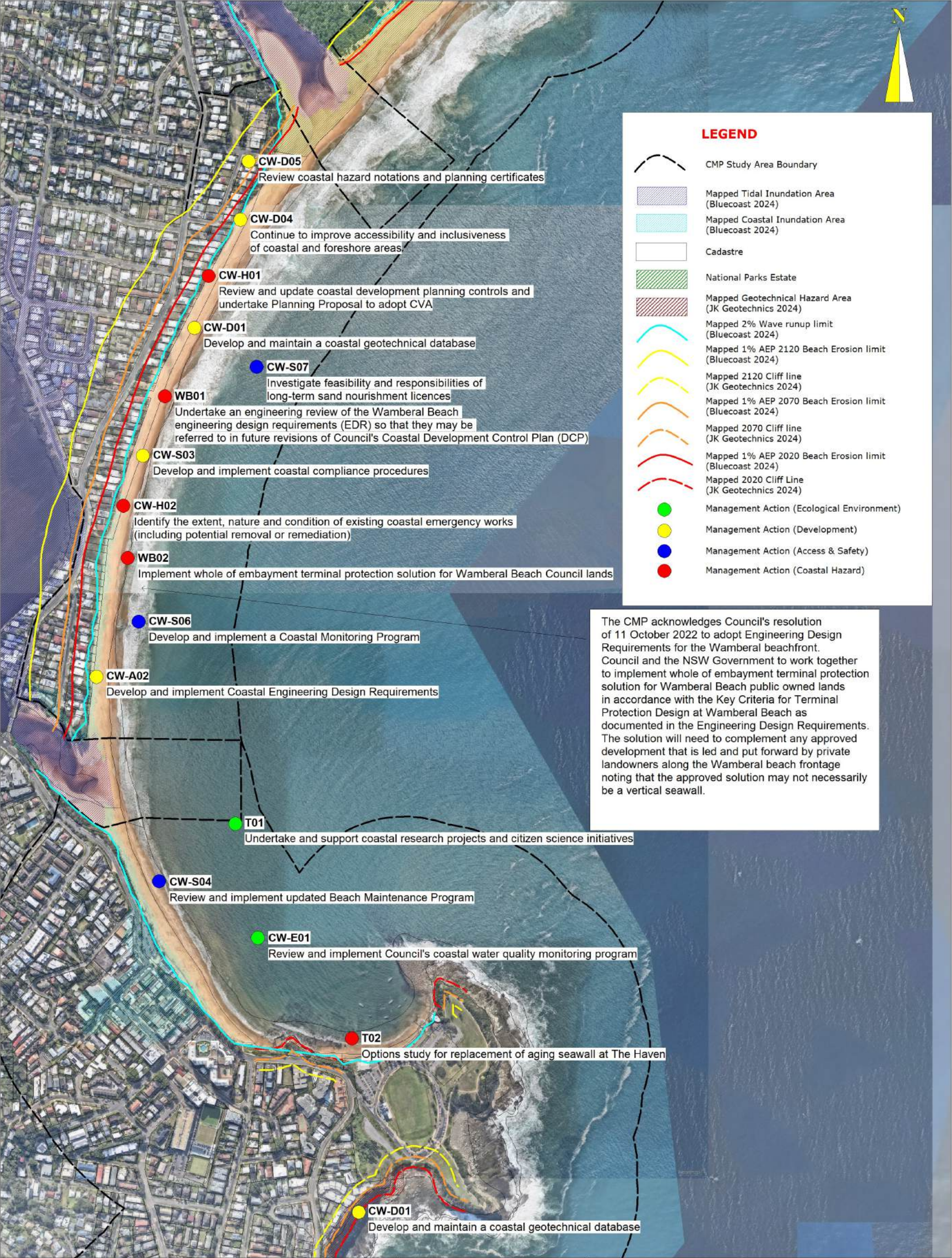
Management Action (Ecological Environment)




Management Action (Development)

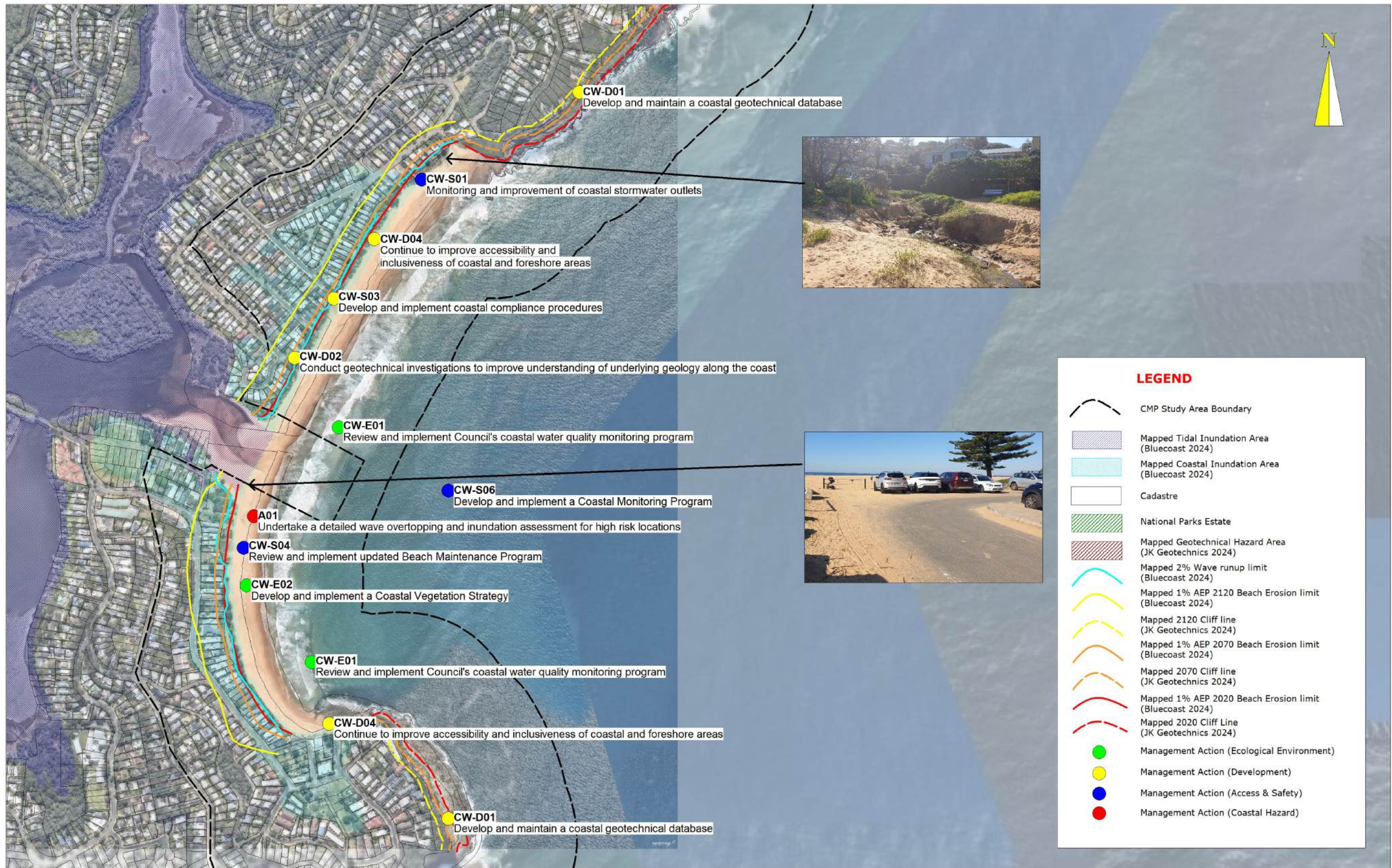
Management Action (Access & Safety)

Management Action (Coastal Hazard)

DATE	COORDINATE SYSTEM	FIGURE TITLE
23.03.2025	MGA 94 Zone 56	Map A25
PROJECT NO.	PROJECT TITLE	CREATED BY
311015-00572	Central Coast Open Coast Coastal Management Program	CA



DATE 23.03.2025	COORDINATE SYSTEM MGA 94 Zone 56	FIGURE TITLE Map A26 Coastal Management Actions Terrigal/Wamberal	  
PROJECT NO. 311015-00572	PROJECT TITLE Central Coast Open Coast Coastal Management Program	CREATED BY CA	



DATE
23.03.2025

PROJECT NO. 311015-00572

COORDINATE SYSTEM
MGA 94 Zone 56

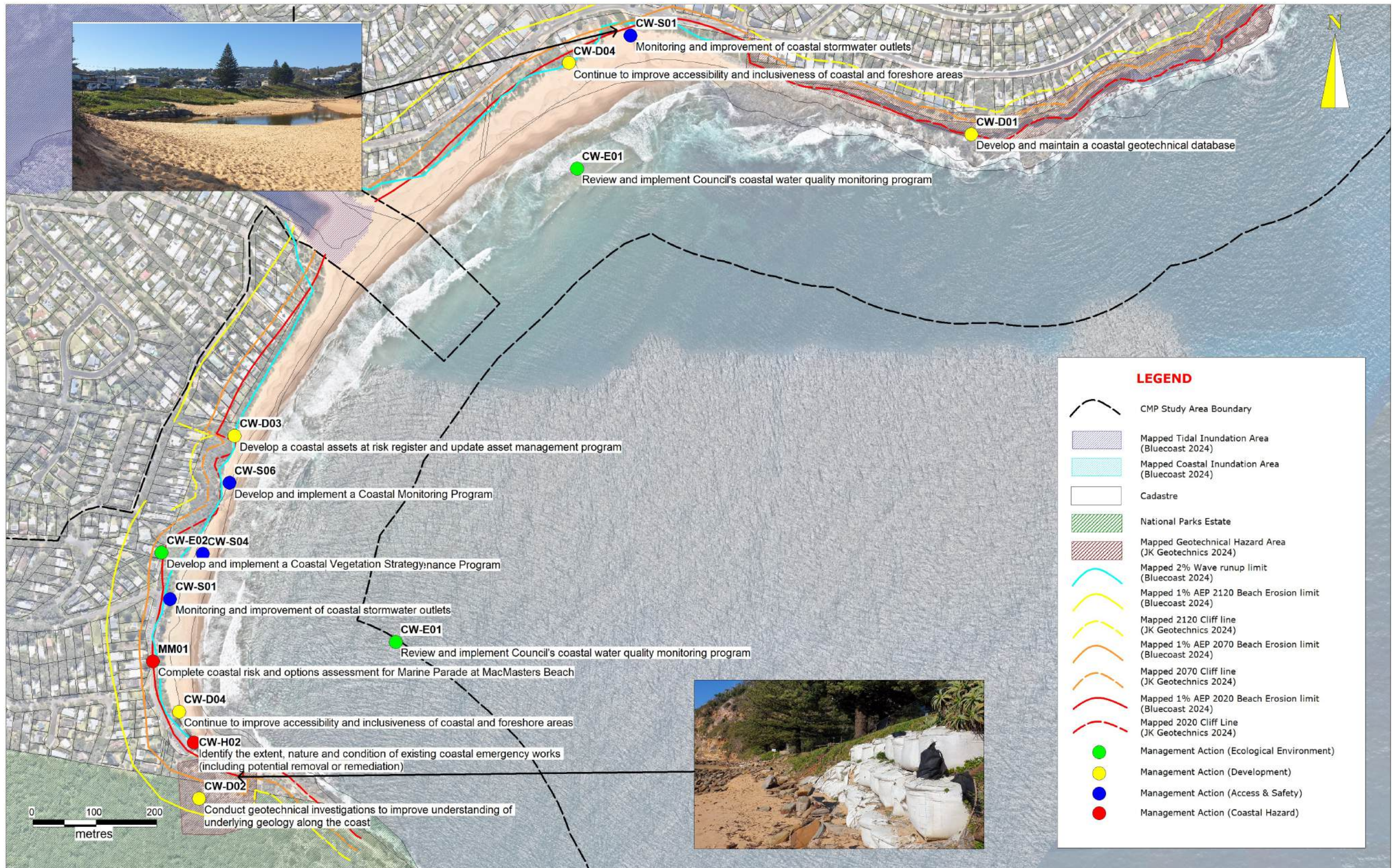
PROJECT TITLE Central Coast Open Coast Coastal Management Program

FIGURE TITLE Coastal Management Actions Avoca/North Avoca

CREATED BY CA

Map A27





DATE
23.03.2025

PROJECT NO. 311015-00572

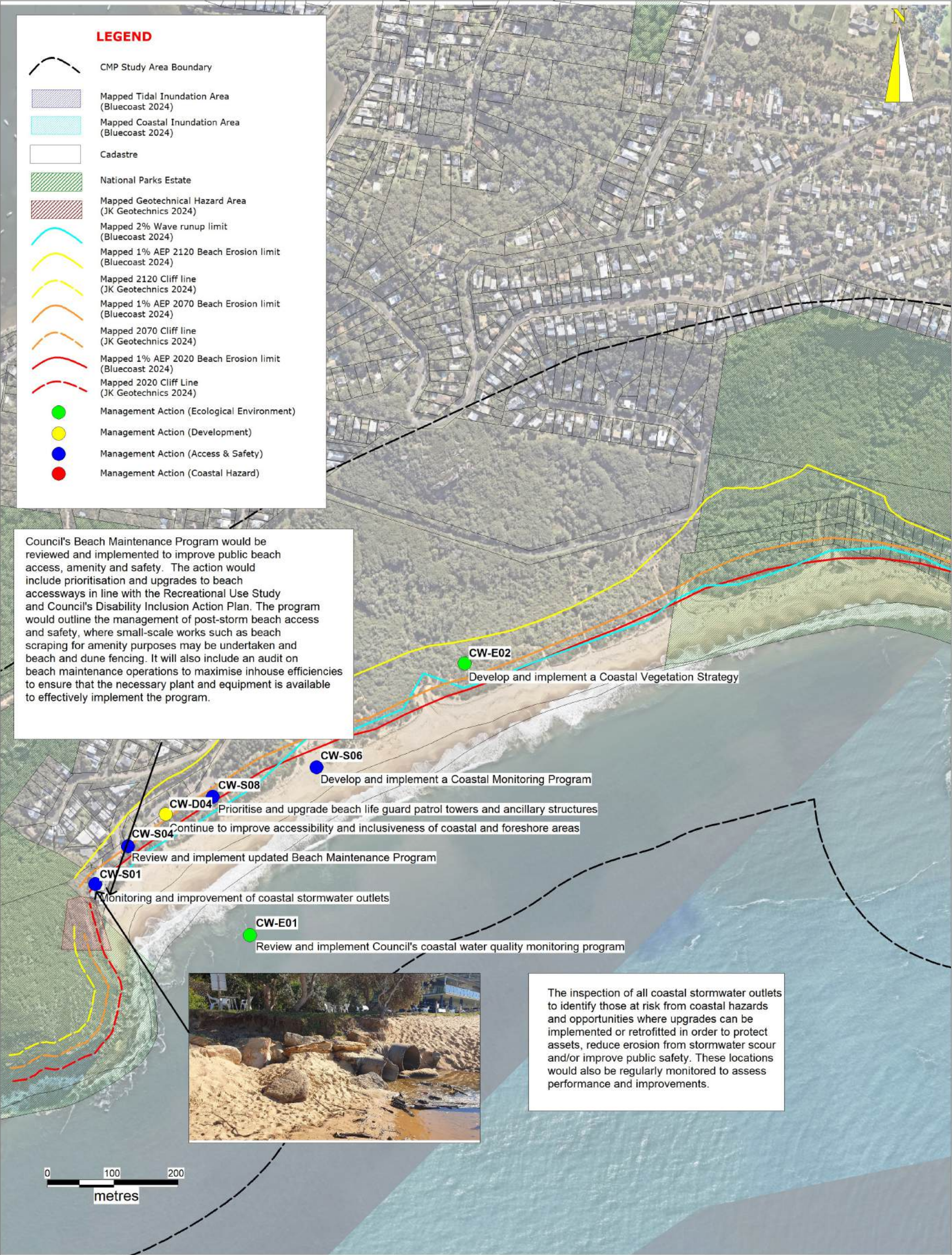
COORDINATE SYSTEM
MGA 94 Zone 56




PROJECT TITLE Central Coast Open Coast Coastal Management Program

FIGURE TITLE Coastal Management Actions MacMasters/Copacabana Map A28

CREATED BY CA





DATE 23.03.2025	COORDINATE SYSTEM MGA 94 Zone 56	FIGURE TITLE Map A29 CMP Management Actions Killcare	  
PROJECT NO. 311015-00572	PROJECT TITLE Central Coast Open Coast Coastal Management Program	CREATED BY CA	